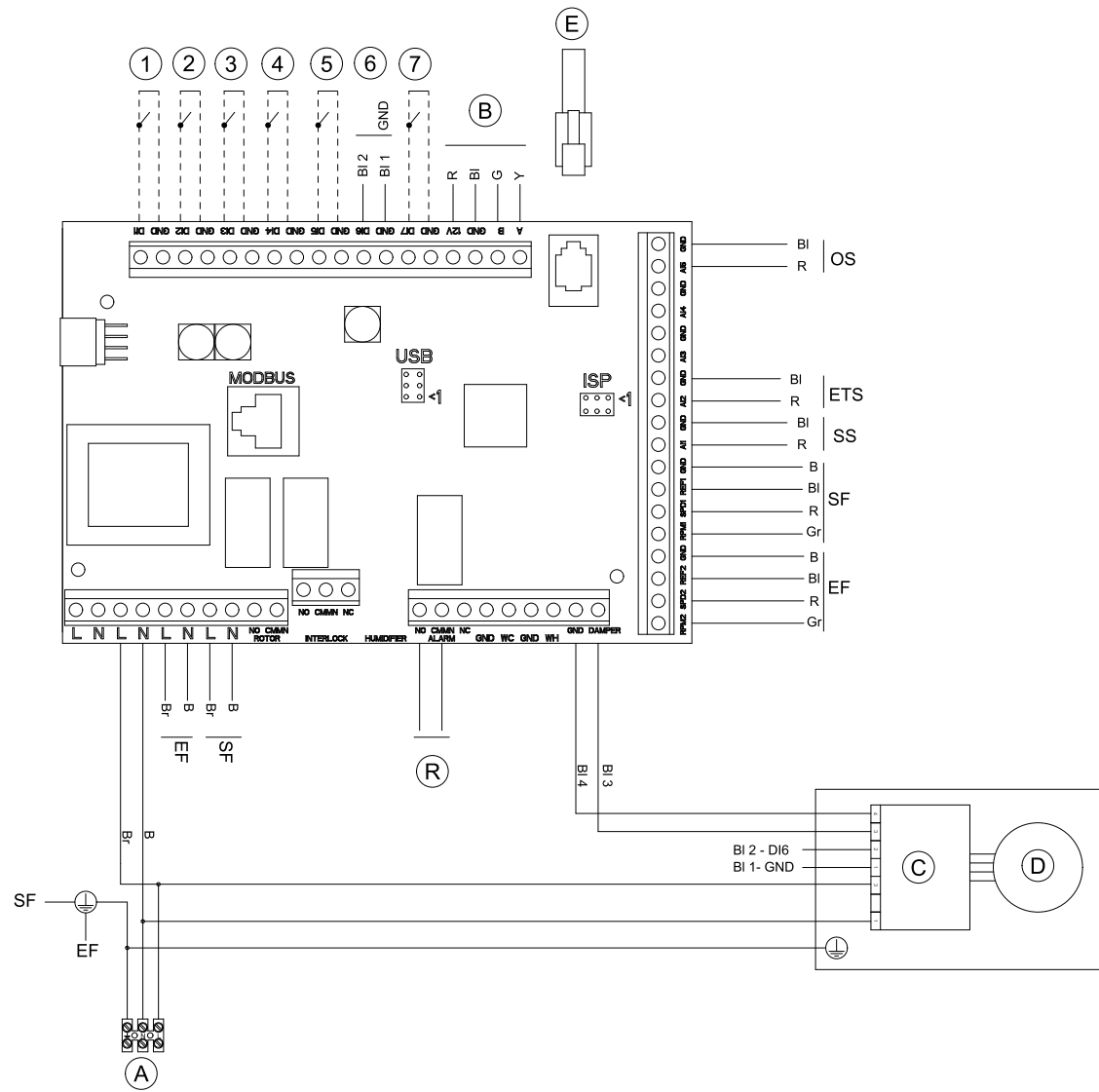
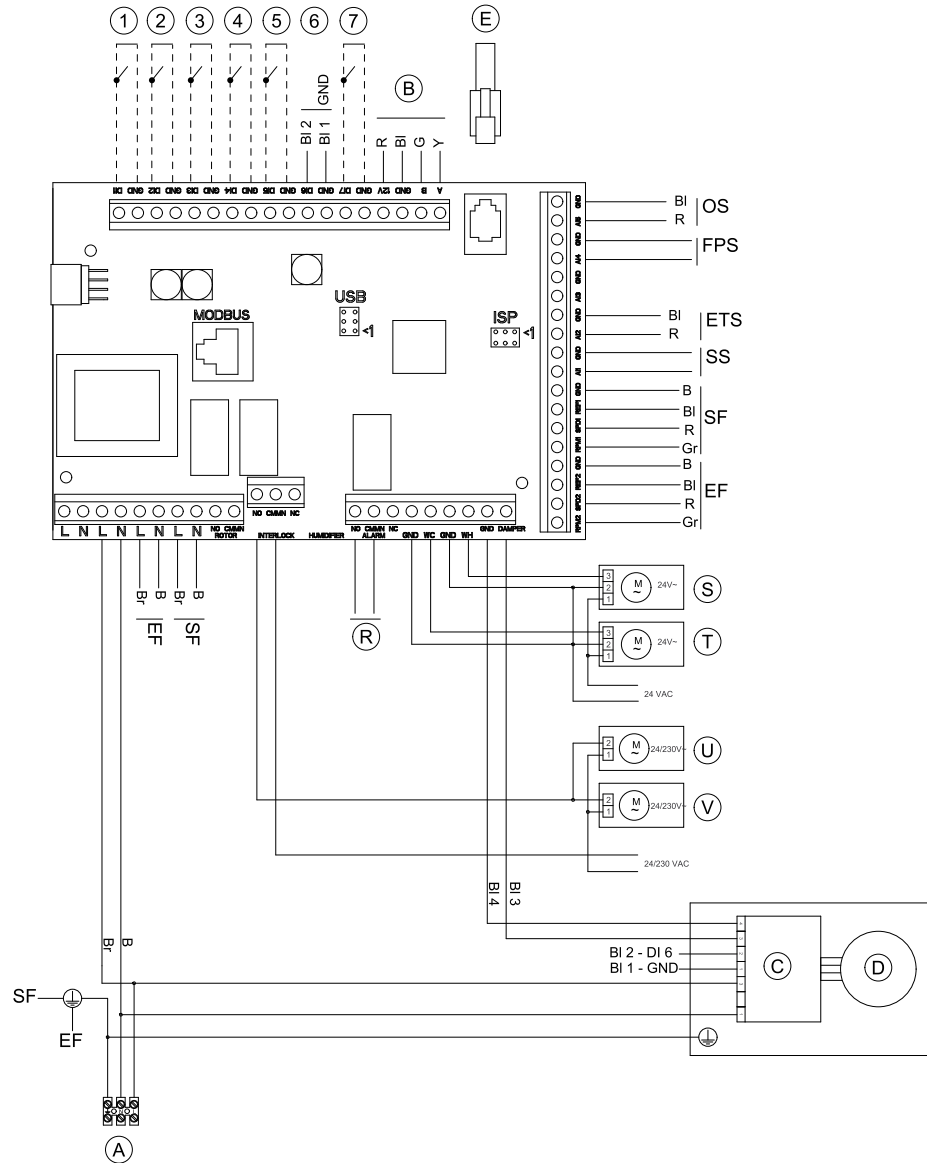


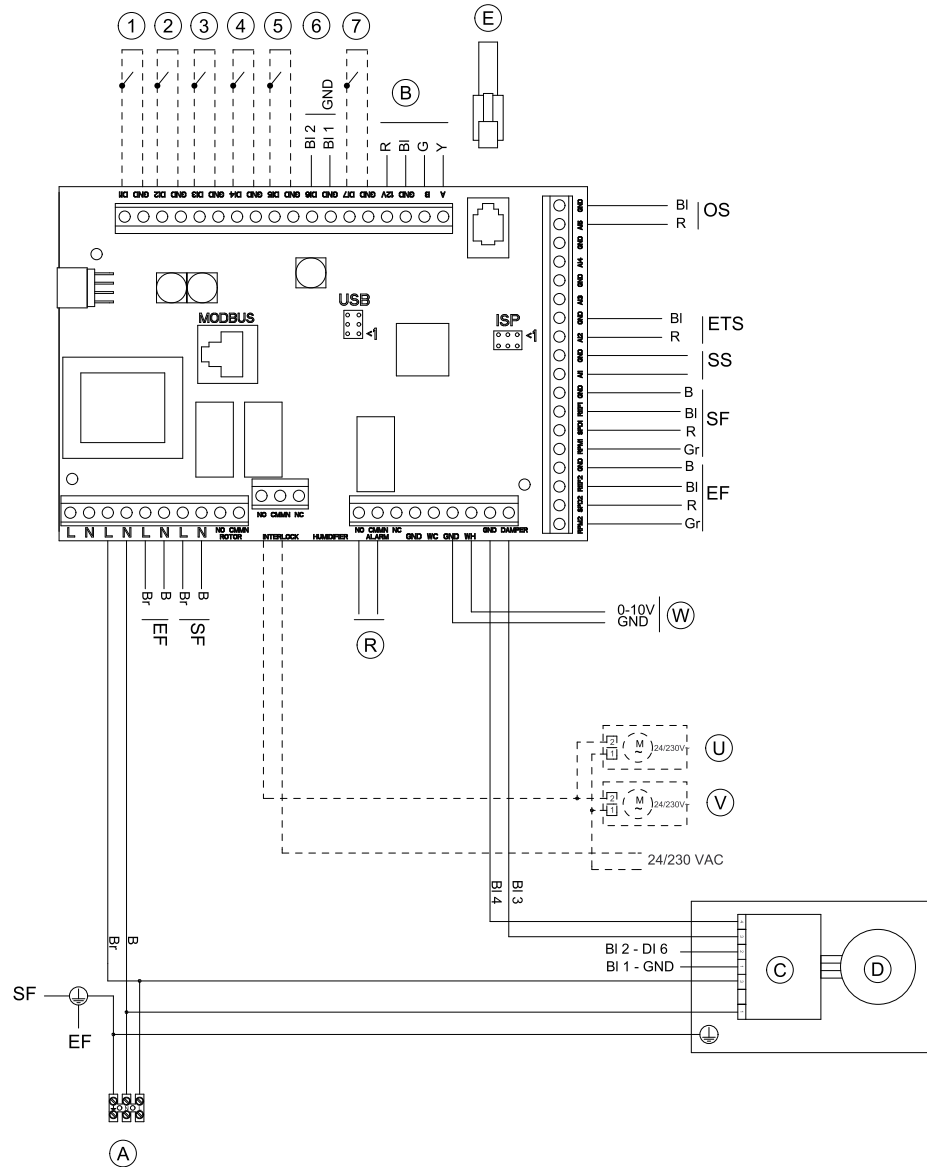
Standard configuration



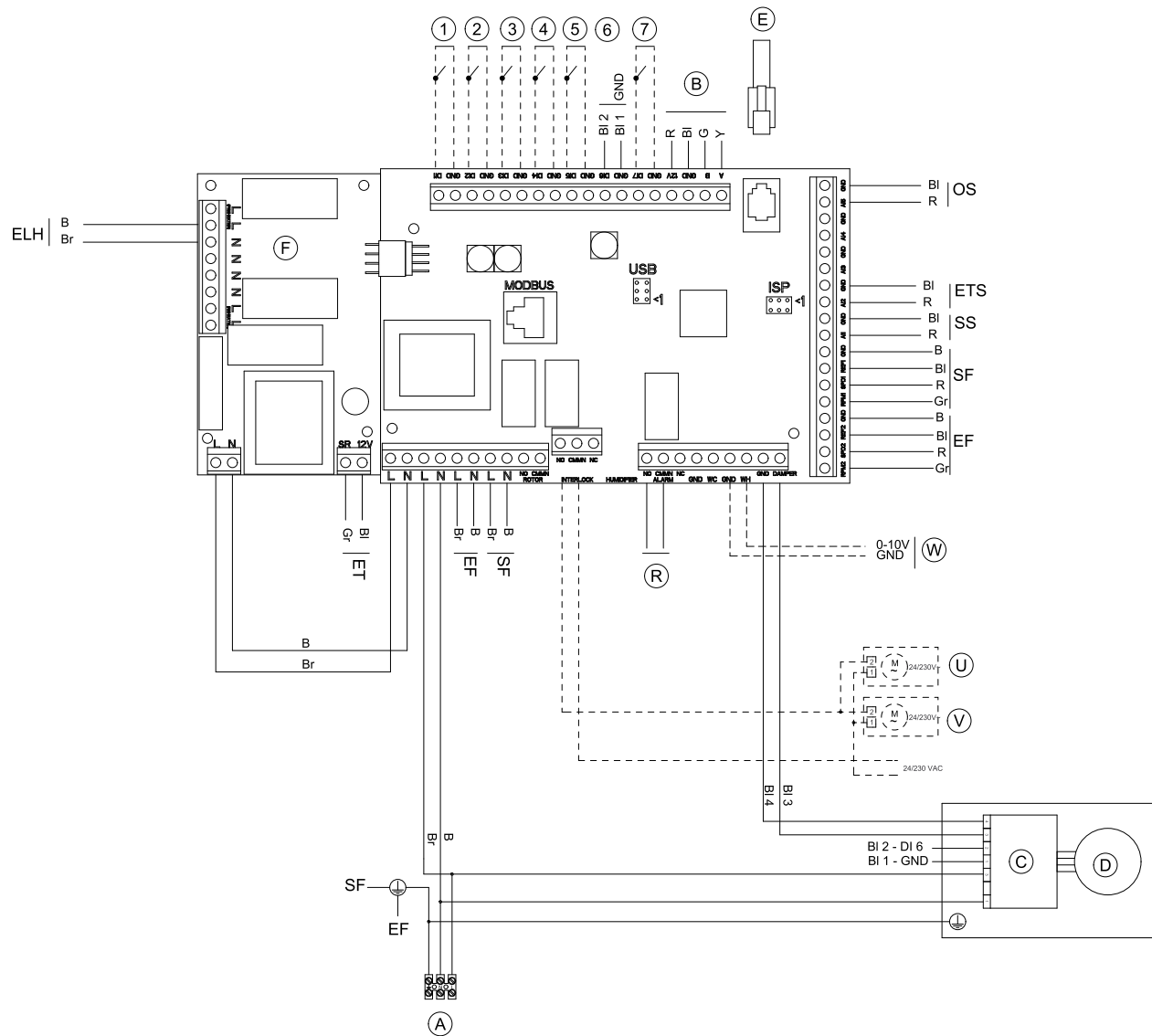
Units with HW re-heater + WC



Units with EL re-heater



Units with EL pre-heater



Symbol descriptions

Symbol	Description
SF	Supply air fan.
EF	Extract air fan.
SS	Supply air temperature sensor. ¹
ETS	Extract air temperature sensor.
ELH	Electrical pre-heater battery.
OS	Outdoor air sensor.
FPS	Frost protection sensor, type TG-A130 ²
ET	Emergency thermostat, if connected to external electrical duct heater.
Ⓐ	Mains supply 230 V~ .
Ⓑ	Internal control panel.
Ⓒ	Motor control (bypass damper).
Ⓓ	Damper motor 12V DC (bypass damper).
Ⓔ	External control panel.
Ⓕ	Circuit board, PCU – PB.
Ⓖ	Sum alarm, Max 24V, 1A
Ⓒ	Water valve actuator, heating
Ⓓ	Water valve actuator, cooling

Symbol	Description
Ⓚ	Damper motor Outside air
Ⓛ	Damper motor Exhaust air
Ⓜ	Re-heater EL/HW 0-10V
①	Fan configuration: (std.: EF = High, SF = High).
②	Fan configuration: (std.: EF = Low, SF = Low).
③	Fan configuration: (std.: EF = Low, SF = High).
④	Disconnected re-heater battery.
⑤	Extended running.
⑥	Damper signal.
⑦	Home/leave.
B	Blue.
Br	Brown.
Bl	Black.
R	Red.
Y	Yellow.
G	Green.
Gr	Grey.

1. For water heating/cooling battery, type TG-K360.
2. Water heating battery.